



AES 1

medikal

Sağlık Ürünleri

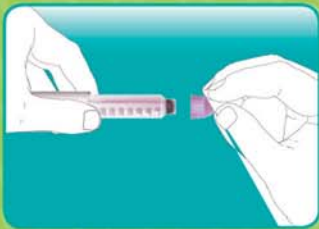
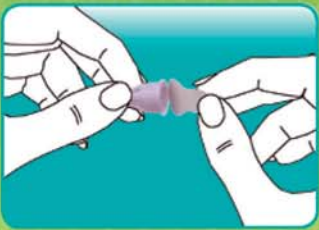




STERIL SINGLE USE INSULIN PEN NEEDLES

- Highest quality for safety and comfortable use!
- Advance production technology with 4 camera system
- Triple long bevel needle tip with laser cutting
- Needle tube with thin wall and bigger inner diameter
- Medical grade siliconized needle for painless injection
- Luer lock system with the pen against insulin leakage
- EO sterilization

Inner-Outer Box
100/10000 Pcs
100/10000 Pcs
100/10000 Pcs
100/10000 Pcs
100/10000 Pcs



		REFERENCE NUMBER					
		LENGHT (inch/mm)					
		5x32"	3/16"	1/4"	5/16"	26/64"	1/2
Gaugge	mm	4	5	6	8	10	12
29	0.33						70079
30	0.30						
31	0.25		70087	70088	70089		
32	0.23	70092					



STERILE SINGLE USE SYRINGES

Various Sizes Conform With International Standards

2 Parts or 3 Parts
 Central Luer Slip or Eccentric Luer Slip
 With or Without Needle
 Hypodermic Needle
 Medical Grade Raw Material
 Polypropylene Barrel
 Polyethylene Plunger
 Latex Free Gasket
 Blister Packaging with Medical Film and Paper
 Sterilization : EO

REFERENCE NUMBERS		NEEDLE SIZES (Gauge x Inch)							Inner Outer Box
Product	Without Needle	18Gx1" (1.20x25 mm)	18Gx1 1/2" (1.20x38 mm)	20Gx1 1/2" (0.90x38 mm)	21Gx1 1/2" (0.80x38 mm)	22Gx1 1/4" (0.70x32 mm)	23Gx1" (0.60x25 mm)	23Gx1 1/4" (0.60x30 mm)	
2P 2ml Center Luer Slip	70717		70530	70529	70527	70528	70536	70535	300/2400
2P 5ml Center, Eccentric Luer Slip	81072	81069	81066	81065	81064	81063	81068	81067	225/1800
2P 10ml Center, Eccentric Luer Slip	70562	70560	70559	70558	70557	70556		70561	150/900
2P 20ml Eccentric Luer Slip	70568	70731	70567	70566	70565	70563		70531	100/600
3P 2ml Center Luer Slip	70591			70582	70579	70578	70581	70580	300/2400
3P 5ml Center, Eccentric Luer Slip	81079		81075	81074	70500	81073	81077	81076	225/1800
3P 10ml Center, Eccentric Luer Slip	70611		70609	70608	70607	70606		70610	150/900
3P 20ml Eccentric Luer Slip	70625		70624	70623	70622	70621		70532	100/600
3P 50ml Eccentric Luer Slip	70061	70713	70630	70629	70628				50/300
3P 50ml Enema, Center Luer	70634								70/280



STERILE SINGLE USE LUER LOCK SYRINGES

Various Sizes Conform With International Standards

3 Parts
 Luer lock
 With or Without Needle
 Hypodermic Needle
 Medical Grade Raw Material
 Polypropylene Barrel
 Polyethylene Plunger
 Latex Free Gasket
 Blister Packaging with Medical Film and Paper
 Sterilization : EO

REFERENCE NUMBERS	NEEDLE SIZES (Gauge x Inch)							
	Without Needle	18Gx1 1/2' (1.20x38 mm)	20Gx1 1/2" (0.90x38 mm)	21Gx1 1/2" (0.80x38 mm)	22Gx1 1/4" (0.70x32 mm)	23Gx1" (0.60x25 mm)	23Gx1 1/4" (0.60x30 mm)	Inner Outer Box
3P 2ml luer lock				70589	70588	81157	81156	300/2400
3P 5ml luer lock		81056	81055	70603	70602	70599	70600	225/1800
3P 10ml luer lock		70619	70620	70618	70617			150/900
3P 20ml luer lock		81244	70627	70626				100/600
3P 50ml luer lock	70710	70633	70632	70631				50/300



STERILE SINGLE USE VACCINE SYRINGES

Various Sizes Conform With International Standards

2 Parts or 3 Parts
 Central Luer Slip or Eccentric Luer Slip and Luer lock
 Hypodermic Needle
 Medical Grade Raw Material
 Polypropylene Barrel
 Polyethylene Plunger
 Latex Free Gasket
 Blister Packaging with Medical Film and Paper
 Sterilization : EO

REFERENCE NUMBERS	NEEDLE SIZES (Gauge x Inch)				Inner Outer Box
	25Gx1" (0.50x25mm)	25Gx1" (0.50x24mm)	25Gx5/8" (0.50x16mm)	26Gx1/2" (0.45x13mm)	
Product					
2P 2ml Center Luer Slip	70540	70541		70539	300/2400
2P 5ml Center /Eccentric Luer slip	81071				300/2400
3P 2ml Center Luer Slip	70586		70587	70590	300/2400
3P 2ml luer lock	70544		70546		300/2400



STERILE SINGLE USE DENTAL SYRINGES

Various Sizes Conform With International Standards

2 Parts or 3 Parts
Luer lock and Central Luer Slip
Hypodermic Needle
Medical Grade Raw Material
Polypropylene Barrel
Polyethylene Plunger
Latex Free Gasket
Blister Packaging with Medical Film and Paper
Sterilization : EO

REFERENCE NUMBERS

Product	NEEDLE SIZES Gauge x Inch)	
	27Gx1 1/2" (0.40x40mm)	27Gx2" (0.40x50mm)
2P 2ml Center Luer Slip	70537	70538
3P 2ml Center Luer Slip	70585	70584
3P 2ml Dental Luer lock	81040	81041
Inner-Outer Box	300/2400	250/2000



STERILE SINGLE USE BLOOD GAS SYRINGES

Various Sizes Conform With International Standards

3 Parts
 With or Without Needle
 Luer lock and Central Luer Slip
 Hypodermic Needle
 Medical Grade Raw Material
 Polypropylene Barrel
 Polyethylene Plunger
 Latex Free Gasket
 Blister Packaging with Medical Film and Paper
 Sterilization : EO

REFERENCE NUMBERS

Product	NEEDLE SIZES (Gauge x Inch)			
	Without Needle	21Gx1 1/2" (0.80x38mm)	22Gx1 1/4" (0.70x32mm)	Inner-Outer Box
3P 2ml Blood Gas Center Luer Slip Liquid Lithium Heparin)	81263	70689	70688	250/2000
3P 2ml Blood Gas Center Luer Slip (Dry Lithium Heparin)	81262		70721	250/2000
3P 2ml Blood Gas Luerlock (Liquid Lityum Heparin)			81265	250/2000
3P 2ml Blood Gas Luerlock (Dry Lityum Heparin)			81264	250/2000



STERILE SINGLE USE INSULIN AND TUBERCULINE SYRINGES

Various Sizes Conform With International Standards

With or without needle
Hypodermic needles with ultra fine cannula
No dead space
I.U. and ml calibration
Medical grade raw material
Polypropylene barrel
Polyethylene plunger
Latex free gasket
Blister packaging with medical film and paper
Sterilization : EO

REFERENCE NUMBERS	NEEDLE SIZES (Gauge x Inch)							
	Without Needle	26Gx3/8" 0,45x10 mm)	26Gx1/2" (0,45x13 mm)	29Gx1/2" (0,33x13 mm)	29Gx1/2" (0,33x12 mm)	30Gx1/2" (0,30x13 mm)	30Gx5/16" (0,30x8 mm)	Inner Outer Box
3P 0,5ml Super Insuline 50 I.U.					70569		70570	50/1500
3P 1ml Super Insuline 100 I.U.						70574	70571	50/1500
3P 1ml Insuline 100 I.U.	70577		70575	70573		70564		250/2000
3P 0,5ml Tuberculine					70732			250/2000
3P 1ml Tuberculine		70572	70576					250/2000



STERILE SINGLE USE VETERINARY SYRINGES

Various Sizes Conform With International Standards

2 Parts or 3 Parts
 Central Luer Slip or Eccentric Luer Slip
 Hypodermic Needle
 Medical Grade Raw Material
 Polypropylene Barrel
 Polyethylene Plunger
 Latex Free Gasket
 Blister Packaging with Medical Film and Paper
 EO: Sterilization

REFERENCE NUMBERS	NEEDLE SIZES (Gauge x Inch)		
	21Gx5/8 " (0.80x16mm)	18Gx1 1/2' (1.20x38 mm)	Inner-Outer Box
Product			
3P 2ml Center Luer Slip	70583		300/2400
2P 2ml Center Luer Slip	70543	70530	300/2400
2P 5ml Eccentric Luer Slip	81070	81066	225/1800
3P 5ml Eccentric Luer Slip	81078	81075	225/1800
2P 10ml Eccentric Luer Slip		70559	150/900
2P 20ml Eccentric Luer Slip		70567	100/600
3P 50ml Eccentric Luer Slip		70630	50/300



STERILE SINGLE USE HYPODERMIC NEEDLES

Various Sizes Conform With International Standards

STANDARD : EN ISO 7864

Cannula : High Quality Stainless Steel

Transparent Cap: Medical Grade PP

Hub : Medical Grade PP and Colourant

Bevel: Triple Long Bevel or Short Bevel

Wall Thickness : Ultra Thin Wall or Regular Wall 6% Luer Slip

Color Code : ISO 6009

Packing : Blister Packing wiht Medical Film and Paper

Sterilization : EO

Product

REFERENCE NUMBERS			NEEDLE SIZES (Gauge x Inch)					
18G x 1" (1.20x25mm)	18G x 1 1/2" (1.20x38mm)	20G x 1 1/2" (0.90x38mm)	21G x 5/8" (0.80x16mm)	21G x 1 1/2" (0.80x38mm)	22G x 1 1/4" (0.70x32mm)	23G x 1" (0.60x25mm)	23G x 1 1/4" (0.60x30mm)	25G x 5/8" (0.50x16mm)
70746	70504	70503	70505	70502	70501	70509	70510	81261



25G x 1" (0.50x25mm)	26G x 1/2" (0.45x13mm)	27G x 1 1/2" (0.40x40mm)	27G x 2" (0.40x50mm)	29G x 1/2" (0.33x13mm)	30G x 5/32" (0.30x4mm)	30G x 1/2" (0.30x13mm)	Inner-Outer Box
81261	70506	70507	70508	70703	81184	70511	500/5000

BLOOD COLLECTION TUBES

Various Sizes Conform With International Standards

Standard : EN 14820

Tube: Medical Grade PET

Stopper : Butyl Rubber

Cap: Medical Grade Polypropylene

Color Code: ISO 6710

Sterilization : Radiation

PRODUCT DESCRIPTION: AYSET evacuated blood collection tubes are PET Plastic Tubes conform with International standards. Tubes are used in clinical laboratories for venous or whole blood tests. Blood collection tubes are single use only.

Ayset Tubes (Hematology)

3K EDTA-2K EDTA-2K EDTA+GEL



Cap color : Purple



Draw Volume (ml)	Dimensions (mm)	Letter Code	Reference Number	Inner -Outer Box
Additive : 3K EDTA				
1ml	13 x 75	K3E	70687	100/1000
2ml	13 x 75	K3E	70664	100/1000
3ml	13 x 75	K3E	70697	100/1000
4ml	13 x 75	K3E	70665	100/1000
4,5ml	13 x 75	K3E	70487	100/1000
5ml	13 x 100	K3E	70716	100/1000
6ml	13 x 100	K3E	70730	100/1000
7ml	16 x 100	K3E	70757	100/1000
9ml	16 x 100	K3E	70699	100/1000
Additive : 2K EDTA				
2ml	13 x 75	K2E	70660	100/1000
3ml	13 X 75	K2E	70685	100/1000
4ml	13 x 75	K2E	70661	100/1000
6ml	13 x 100	K2E	81032	100/1000
9ml	16 x 100	K2E	81184	100/1000
Additive : 2K EDTA +GEL				
4ml	13 x 75	K2ES	70662	100/1000
9ml	16 x 100	K2ES	70663	100/1000

Ayset Serum Tubes

Additive : Gel and Clot Activator



Cap color : Yellow

Draw Volume (ml)	Dimensions (mm)	Letter Code	Reference Number	Inner -Outer Box
2ml	13 x 75	ZS	70071	100/1000
3ml	13 x 75	ZS	70059	100/1000
3,5ml	13 x 75	ZS	70657	100/1000
4ml	13 x 75	ZS	70686	100/1000
5ml	13 x 100	ZS	70658	100/1000
5,5ml	13 x 100	ZS	70758	100/1000
6ml	16 x 100	ZS	70723	100/1000
6,5ml	16 x 100	ZS	81241	100/1000
8ml	16 x 100	ZS	70726	100/1000
8,5ml	16 x 100	ZS	70659	100/1000
9ml	16 x 100	ZS	70070	100/1000

AYSET Lithium Heparin Tubes

Additive : Lithium Heparin -Lithium Heparin +Gel



Cap color : Green

Draw Volume (ml)	Dimensions (mm)	Letter Code	Reference Number	Inner -Outer Box
Additive :Lithium Heparin				
2ml	13 x 75	LH	70681	100/1000
2.7ml	13 x 75	LH	70683	100/1000
3ml	13 x 75	LH	70069	100/1000
4ml	13 x 75	LH	70666	100/1000
5ml	13 x 100	LH	70727	100/1000
6ml	13 X 100	LH	70667	100/1000
9ml	16 x 100	LH	70668	100/1000
Additive :Lithium Heparin + Gel				
Cap Color : Light Green				
3ml	13 X 75	LHS	81141	100/1000
4ml	13 x 100	LHS	70669	100/1000
5ml	13 x 100	LHS	70719	100/1000
9ml	16 x 100	LHS	70670	100/1000

AYSET Sodium Heparin Tubes

Additive : Sodium Heparin



Cap color : Green

Draw Volume (ml)	Dimensions (mm)	Letter Code	Reference Number	Inner -Outer Box
3ml	13 x 75	NH	70671	100/1000
5ml	13 x 100	NH	70672	100/1000
8ml	16 x 100	NH	70673	100/1000

BLOOD COLLECTION TUBES

AYSET Coagulation Tubes

Additive :Sodium Citrate 3.2% -3.8%



Cap color : Blue



Draw Volume (ml)	Dimensions (mm)	Letter Code	Reference Number	Inner -Outer Box
Additive :Sodium Citrate 3.2%				
1.8ml	13 x 75	9NC	70677	100/1000
2ml	13 x 75	9NC	70700	100/1000
2.5ml	13 x 75	9NC	70698	100/1000
2.7ml	13 x 75	9NC	70676	100/1000
3ml	13 x 75	9NC	81047	100/1000
3.6ml	13 x 75	9NC	70714	100/1000
4ml	13 x 75	9NC	70712	100/1000
4.5ml	13 x 75	9NC	70722	100/1000
5ml	13 x 100	9NC	81245	100/1000
Additive :Sodium Citrate 3.8%				
1.8ml	13 X 75	9NC	70060	100/1000
2.7ml	13 x 75	9NC	81202	100/1000
3ml	13 x 75	9NC	81033	100/1000
3.6ml	13 x 75	9NC	81201	100/1000

AYSET ESR Tubes

Additive :Sodium Citrate 3.8 %



Cap color : Black



Draw Volume (ml)	Dimensions (mm)	Letter Code	Reference Number	Inner -Outer Box
1.6ml	13 x 75	4NC	70678	100/1000
1.8ml	13 x 75	4NC	70679	100/1000
2ml	13 x 75	4NC	70748	100/1000
2.4ml	13 x 75	4NC	81142	100/1000
2.5ml	13 x 75	4NC	70684	100/1000

Ayset Serum Tubes
Additive : Clot Activator



Cap color : Red

Draw Volume (ml)	Dimensions (mm)	Letter Code	Reference Number	Inner -Outer Box
3ml	13 x 75	ZS	81185	100/1000
4ml	13 x 75	ZS	70654	100/1000
5ml	13 x 100	ZS	70692	100/1000
6ml	13 x 100	ZS	70655	100/1000
8ml	16 x 100	ZS	70747	100/1000
9ml	16 x 100	ZS	70656	100/1000
10ml	16 x 100	ZS	70702	100/1000

AYSET Glucose Tubes

Sodium Fluoride+3K EDTA/Sodium Fluoride +2K EDTA/Sodium Fluoride + EDTA Na2



Cap color : Grey

Draw Volume (ml)	Dimensions (mm)	Letter Code	Reference Number	Inner -Outer Box
Additive :Sodium Fluoride+Potassium oxalate				
2ml	13 x 75	FX	70674	100/1000
3ml	13 x 75	FX	70675	100/1000
4ml	13 x 75	FX	70711	100/1000
Additive :Sodium Fluoride+3K EDTA				
2ml	13 x 75	FE3K	70754	100/1000
3ml	13 x 75	FE3K	70729	100/1000
Additive :Sodium Fluoride+2K EDTA				
2ml	13 x 75	FE2K	70062	100/1000
3ml	13 x 75	FE2K	70063	100/1000
Additive :Sodium Fluoride+EDTA Na2				
2ml	13 x 75	FEN	70696	100/1000

AYSET No Additive Tubes



Cap color : Red

Draw Volume (ml)	Dimensions (mm)	Letter Code	Reference Number	Inner -Outer Box
2ml	13 x 75	Z	70756	100/1000
4ml	13 x 75	Z	70651	100/1000
5ml	13 x 100	Z	70728	100/1000
6ml	13 x 100	Z	70652	100/1000
8.5ml	16 x 100	Z	70480	100/1000
9ml	16 x 100	Z	70653	100/1000
10ml	16 x 100	Z	70701	100/1000

AYSET PEDIATRIC TUBES

Ayset Pediatric Tubes are designed for easy capillary blood collection.

Single Use
Non Sterile
Medical Grade PET
CAP : Medical Grade Polypropylene
Color code : ISO 6710

Capillary Blood Collection

- Fingertip on admission, heel or lobe on infants are wiped with 70% alcohol.
- After a drying process, a hamlet is drilled with a lancet.
- The first blood is removed. Later, spouts that come out spontaneously are impregnated into capillary tube

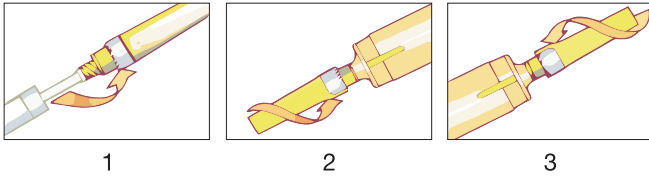
Type	Size	Color	Reference Number	Inner Outer Box
0,5ml Pediatric with Gel Micro Tube	0,25ml/0,5ml	Yellow	81242	100/1000 Pcs
0,5ml Pediatric No Addivite Tube	0,25ml/0,5ml	Red	81246	100/1000 Pcs
0,5ml Pediatric with Gel and clot activator Tube	0,25ml/0,5ml	Yellow	81247	100/1000 Pcs
0,5ml Pediatric with K2 EDTA Tube	0,25ml/0,5ml	Pink	81248	100/1000 Pcs
0,5ml Pediatric with K3 EDTA Tube	0,25ml/0,5ml	Purple	81249	100/1000 Pcs
0,5ml Pediatric with Sodium Heparin Tube	0,25ml/0,5ml	Green	81250	100/1000 Pcs



STERILE SINGLE USE BLOOD COLLECTION NEEDLES

Various Sizes Conform With International Standards

Cannula : High quality stainless steel
 Transparent Cap : Medical Grade PP
 Colour Cap : Medical grade PE and colourant
 Sleeve : Latex free medical grade rubber
 Hub : Medical grade PE and colourant
 Colour Code : ISO 6009
 Sterilization : EO



instruction for use

Product : Blood Collection Needles			
Size (Gauge x Inch)	Color Code	Reference Number	Inner-Outer Box
18G x 1" (1,20x25mm)		70533	100/2000
18G x 1 1/2" (1,20x38mm)		70526	100/2000
20G x 1" (0,90x25mm)		81270	100/2000
20G x 1 1/2" (0,90x38mm)		70525	100/2000
21G x 1" (0,80x25mm)		81271	100/2000
21G x 1 1/2" (0,80x38mm)		70524	100/2000
22G x 1" (0,70x25mm)		81272	100/2000
22G x 1 1/2" (0,70x38mm)		70523	100/2000
Product : Safety Blood Collection Needles			
21G x 1 1/2" (0,80x38mm)		81252	100/2000
Product : Blood Collection Needles Flashback			
21G x 1 1/2" (0,80x38mm)		81253	100/2000



HOLDERS AND ADAPTERS

Medical Grade Polypropylene
Transparent
Safe Use



Product			
Type	Color	Reference Number	Outer Box
Normal Holder	Clear	70704	400 Pcs
Safety Holder	Clear	70706	50/250 Pcs
Automatic Holder	Clear	70705	50/1000 Pcs
Holder Adapter (Luer)	Clear	81243	50/200 Pcs
Holder Adapter (Luer Lock)	Clear	81273	50/200 Pcs



SCALP VEIN SETS

Various Sizes Conform With International Standards

- Single Use
- Sterile, Non-toxic, Pyrogen Free
- Normal type and Safety type
- Soft Wings
- Thin wall cannula
- Colored Wings
- Protective safety sheath
- Shelf life:5 year
- Blister Packaging with Medical Film and Paper
- Sterilization : EO



Product Type	Color	Reference Number	Inner Outer Box
Vacuum Butterfly Set 21G x 3/4" (0.80x19mm)	Blue	70759	100/1000 Pcs
Vacuum Butterfly Set 23G x 3/4" (0.60x19mm)	Green	70715	100/1000 cs
Safety Butterfly Set 21G x 3/4" (0.80x19mm)"	Blue	81254	100/1000 Pcs
Safety Butterfly Set 23G x 3/4" (0,60x19mm)	Green	81255	100/1000 Pcs
Butterfly Set 21G x 3/4" (0.60x19mm)	Blue	70067	100/1000 Pcs
Butterfly Set 23G x 3/4" (0,60x19mm)	Green	70066	100/1000 Pcs

URINE COLLECTION SYSTEMS

Various Sizes Conform With International Standards

Tube	: Medical Grade PET
Stopper	: Butly Rubber
Cap	: Medical grade polypropylene
Sterilization	: Radiation



Ayset Urine Tubes

Additive : No Additive

Cap Color Yellow

Draw Volume (ml)	Dimensions (mm)	Letter Code	Reference Number	Inner-Outer Box
10ml	16 x 100	Z	70693	100/1000

Ayset Urine Tubes

Additive : Boric Acid

Cap Color Yellow

Draw Volume (ml)	Dimensions (mm)	Letter Code	Reference Number	Inner-Outer Box
10ml	16 x 100	Borik asit Boric Acid	81251	100/1000

URINE COLLECTION SYSTEMS

Various Sizes Conform With International Standards

Cup : Medical Grade PP
Lid : Medical Grade PE and Colourant
Sterilization : EO

SPECIMEN CUPS

Product	Sizes	Reference Number	Cap Color	Outer Box
Sterile Vacuum Urine Container	100ml	70734		450
Sterile Vacuum Urine Container	100ml	70072	Individual Packaging	450
Sterile Urine Container	100ml	70649	Individual Packaging	400
Non Sterile Urine Container	100ml	70650		1000



ELASTIC NET BANDAGE

It is a unique bandage that keeps all of pads firmly and stable over the surface of the body, without applying and adhesive tapes nor any short of conventional bond aids.

FEATURES:

- Setanet; Is produced in the form of a net, there for causes no perspiration.
- Setanet; acquiring multi application positions, can be used all over the body, including wrinkling areas.
- Setanet; does not bind any exhibits no impact on the blood circulation. No skin irritation is experienced as it permits air contact to the skin because of its shape.
- Setanet; causes no perspiration over dressing areas furthermore, thanks to its elasticity, it provides facility for the nurse and the patient during dressing or similar inter ventions.
- Setanet; is also a unique instrument to avoid closure of incisions by the skin wrinkling especially when the fat patients are involved. At the same time, it is used to protect the incisions against transport harms.
- Setanet; serves as varix sock or as an elastic bandage.
- Setanet; is hypoallergenic.
- Setanet; can be sterilized. The liquids of the body, serum, water and similar do not affect it.
- Setanet; is produced by ISO 13485 Quality System Certifi cate and CE certificate.

SETANET; the most efficient bandage to wounds of all sort, produced, with highest quality concerns.

SPECIFICT COMSUMPTIONS

- Neuoro Surgery
- Orthopedic Surgery
- Abdominal Surgery
- Post Operative
- Stabilisation of Colostomy Set
- Plastic and Reconstructive Surgery
- Breast and Thorax Surgery
- Cardiology; Stabilization of ECG Electrods
- Peditry; Stabilization of IV catheters

FORM OF PACKAGING

Setanet is packed in 9 different consumption sizes. Length way of consumption are indicate on every packing.



Product	Outer Box
No: 0	24 Pcs
No: 1	24 Pcs
No: 2	24 Pcs
No: 3	24 Pcs
No: 4	24 Pcs
No: 5	24 Pcs
No: 6	24 Pcs
No: 7	24 Pcs
No: 8	24 Pcs

No. 0 : Finger, Circumcision	Strecthed 25 Meters
No. 1 : Hand, Wrist	25 Meters
No. 2 : Foot, Knee	25 Meters
No. 3 : Arm	25 Meters
No. 4 : Upper Legs	25 Meters
No. 5 : Head, Full Foot	25 Meters
No. 6 : Body, Cheest	25 Meters
No. 7 : Body, Cheest	25 Meters
No. 8 : Body, Cheest	25 Meters

